



6+



4



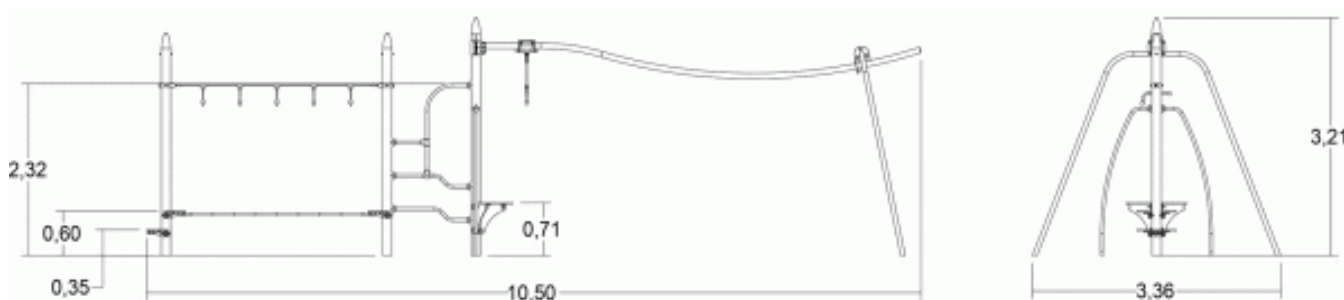
1,55m



1 = 10,51m
2 = 3,37m
3 = 3,21m



Motor inclusion
Sensory inclusion
Mental inclusion



Play value : **5**

hanging



x1

balancing



x1

climbing



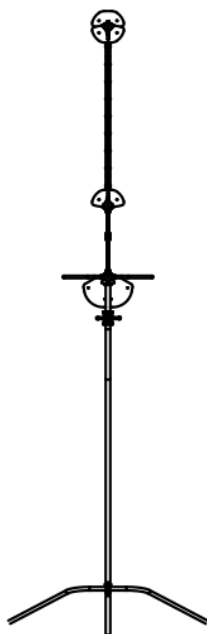
x1

getting across



x2

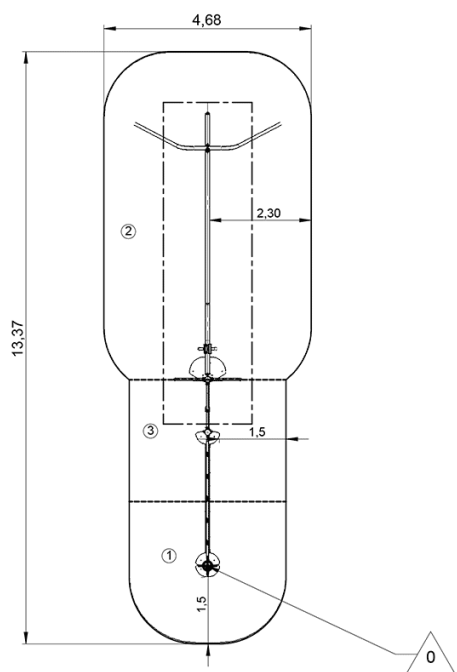
Components



Installation of equipment

Impact area =

— Impact area
- - - Free space



1	0,6m	10,5m ²
2	1m	33,5m ²
3	1,55m	10m ²



2

08h00

0.89m³

54m²

169kg

41kg

EN

1176